



MUHAN Co., Ltd. COMPANY PROFILE

MANAGEMENT IDEOLOGY

To become a global company with the goal of growing into a global company, we will work together in every way to become an original, creative, and creative company, and grow into an international level manufacturing and distribution company.



Management ideology

- Product development with efficiency, reliability
- Quality Management Thinking of Customers
- Employees' loyalty and ownership



The motto of a company

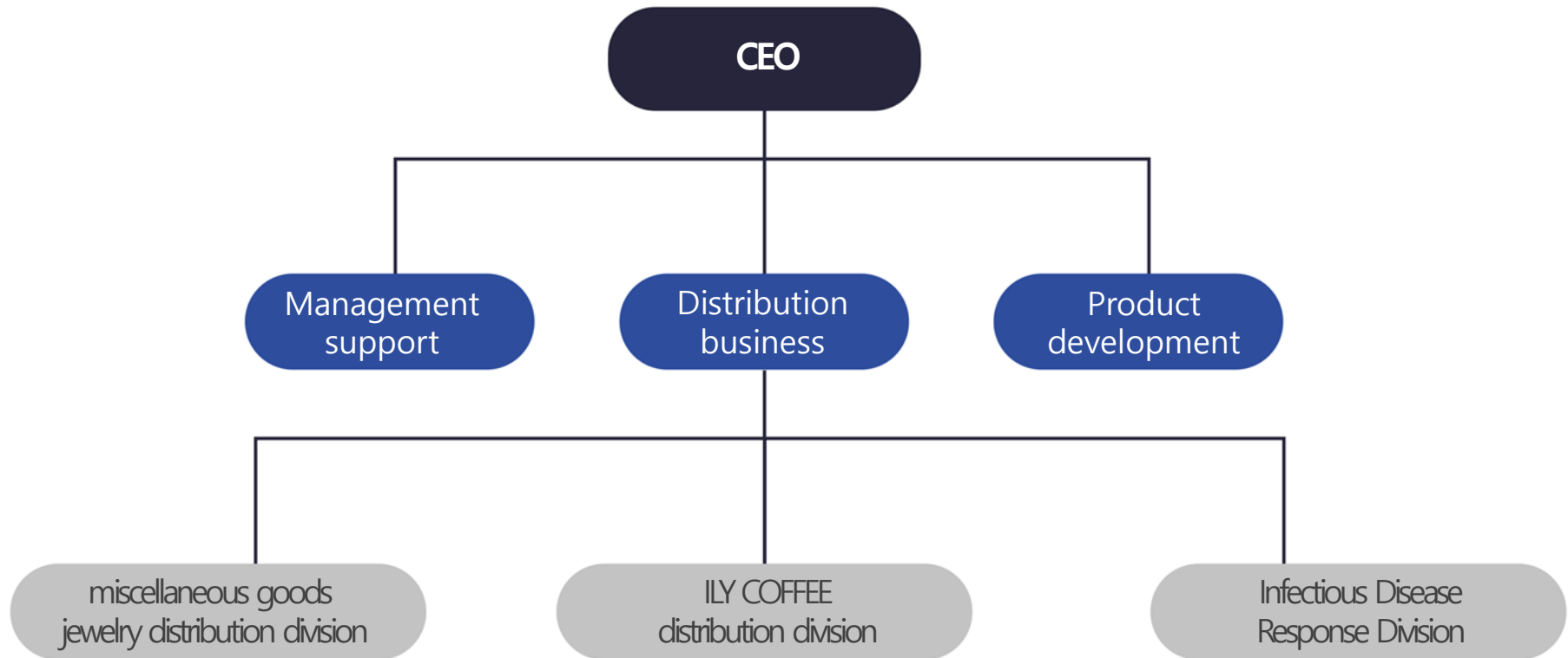
- Constant challenge
- Indomitable will
- An infinite Creation mind



Code of conduct

- An extraordinary idea
- Extraordinary strategy
- Extraordinary behavior

ORGANIZATIO



COMPANY HISTORY

Founding & Leaping

- Launch New Products
- Distribution network maintenance
- Technological development

Growth & Stability

- National Branch Network Expansion
- Entry into the special market
- Entry into department stores

vision 2020

- Expansion of new business
- New factory in china
- Get a new growth engine

History (2012~now)

- 12. 2012 Establishment of MUHAN Corporation, Inc.
- 12. 2012 AUDI, LENOMA Duty Free Shop and Department Store open a store
- 12. 2012 Nixon Online Distributor Agreement
- 12. 2012 Kenneth Cole National Distributor Agreement
- 11. 2015 Acquisition of the FOCE trademark
- 04. 2016 Swiss 150-year-old Brand Henry Blanc Acquire Global Trademark Rights
- 09. 2016 SCORPION trademark acquisition
- 12. 2017 License Tottenham Hotspur Collaboration Acquisition
- 02. 2018 Henry Cotton License Agreement
- 02. 2018 CLAREO OEM Manufacturing Contracts
- 05. 2018 CODEMUNTZ OEM manufacturing contract concluded
- 09. 2018 Participation in the Hong Kong Trade Fair
- 01. 2019 MPGUARD protective clothing launching
- 06. 2019 Establish a distribution department for Ili Coffee
- 09. 2019 Participation in the Hong Kong Trade Fair
- 03. 2020 Defense Clothes/FDA Approved

PRODUCT DESCRIPTIONS



medical protective clothing



medical gown

PRODUCTION LINE



PRODUCTION LINE





**Protective Medical
Cloth - Level D
MP60G
Related product proposal**





Artificial blood
permeability resistance

STEP 1~6 PASS



liquid penetration test(%)

MD penetration index 0.0%

CD penetration index 0.0%

ISO16603 Certification

MP GUARD is

Level D protective clothing that effectively protects against the penetration of viruses, bacteria, blood and foreign substances from outside. The non-woven laminated fabric, which maintains moisture and waterproofing while delaying or blocking the penetration of various types of viruses, makes it more pleasant and durable for the caregiver (medical staff).



KATRI TEST PASS

Completed blood and body penetration resistance test using synthetic blood
Same as CE certified EN14126 / ISO 16603 certified

KATRI 한국의를시험연구원 (안양동) T: 031-596-5600 F: 031-596-5700 www.katri.re.kr

시험성적서

KATRI NO : SPE
 접수일자 : 202
 발급일자 : 202
 품도 : 제1
 PAGE(S) : 1 /

시험항목: 인공혈액침투시험 : KS K ISO 16603:2012

시험항목	시험결과
Step 1	Pass
Step 2	Pass
Step 3	Pass
Step 4	Pass
Step 5	Pass
Step 6	Pass

주) 1. Step 1 : 0 kPa에서 5 min 동안 유지
 2. Step 2 : 이어서 3.5 kPa/s의 속도로 천천히 압력을 올려 5 min 동안 1.75 kPa
 3. Step 3 : 이어서 3.5 kPa/s의 속도로 천천히 압력을 올려 5 min 동안 3.5 kPa
 4. Step 4 : 이어서 3.5 kPa/s의 속도로 천천히 압력을 올려 5 min 동안 7 kPa 유지
 5. Step 5 : 이어서 3.5 kPa/s의 속도로 천천히 압력을 올려 5 min 동안 14 kPa 유지
 6. Step 6 : 이어서 3.5 kPa/s의 속도로 천천히 압력을 올려 5 min 동안 20 kPa 유지
 7. 절차 C : 시험고정용 유지압을 사용하지 않음

기술책임자: 김찬우

시험장소: 경기도 안양시 만안구 덕천로48번길 19(안양동)

KATRI 한국의를시험연구원 (안양동) T: 031-596-5600 F: 031-596-5700 www.katri.re.kr

시험성적서

KATRI NO : SPEA20-00000105
 PAGE(S) : 4 / 4

시험항목: 인공혈액침투시험 (%) : 고형노동부고시 제2020-35호, 별표 8의4

시험항목	시험결과
MO	0.0
- CLASS	3
OD	0.0
- CLASS	3

주) 1. 투입한 시약량: 10 ml
 2. 시약 투입속도: 1 ml/s
 3. 고형노동부고시 제 2020-35호, 별표 8의2 호에 따른 시험성능 기준
 Class 1 : < 10 %
 Class 2 : < 5 %
 Class 3 : < 1 %

금속강도: 고형노동부고시 제2020-35호, 별표 8의4

시험항목	시험결과
경사 방형	> 100 000
경사 방형 (CLASS)	6
위사 방형	> 100 000
위사 방형 (CLASS)	6

주) 1. 금속시험: ISO 7854:1995 Method B
 - 확인판정: 누설시험이 적용되지 않아 최종정 결정에 확인판정 사용함
 2. 판정기준: 규정 횟수의 금속 처리후, 관열 및 딱지가 없음
 3. 고형노동부고시 제 2020-35호 별표 8의2에 의하여 class 판정
 Class 1 : > 1 000
 Class 2 : > 2 500
 Class 3 : > 5 000
 Class 4 : > 15 000
 Class 5 : > 40 000
 Class 6 : > 100 000

시험항목	시험결과
인공혈액침투시험 : KS K ISO 16603:2012	
Step 1	Pass
Step 2	Pass
Step 3	Pass
Step 4	Pass
Step 5	Pass
Step 6	Pass

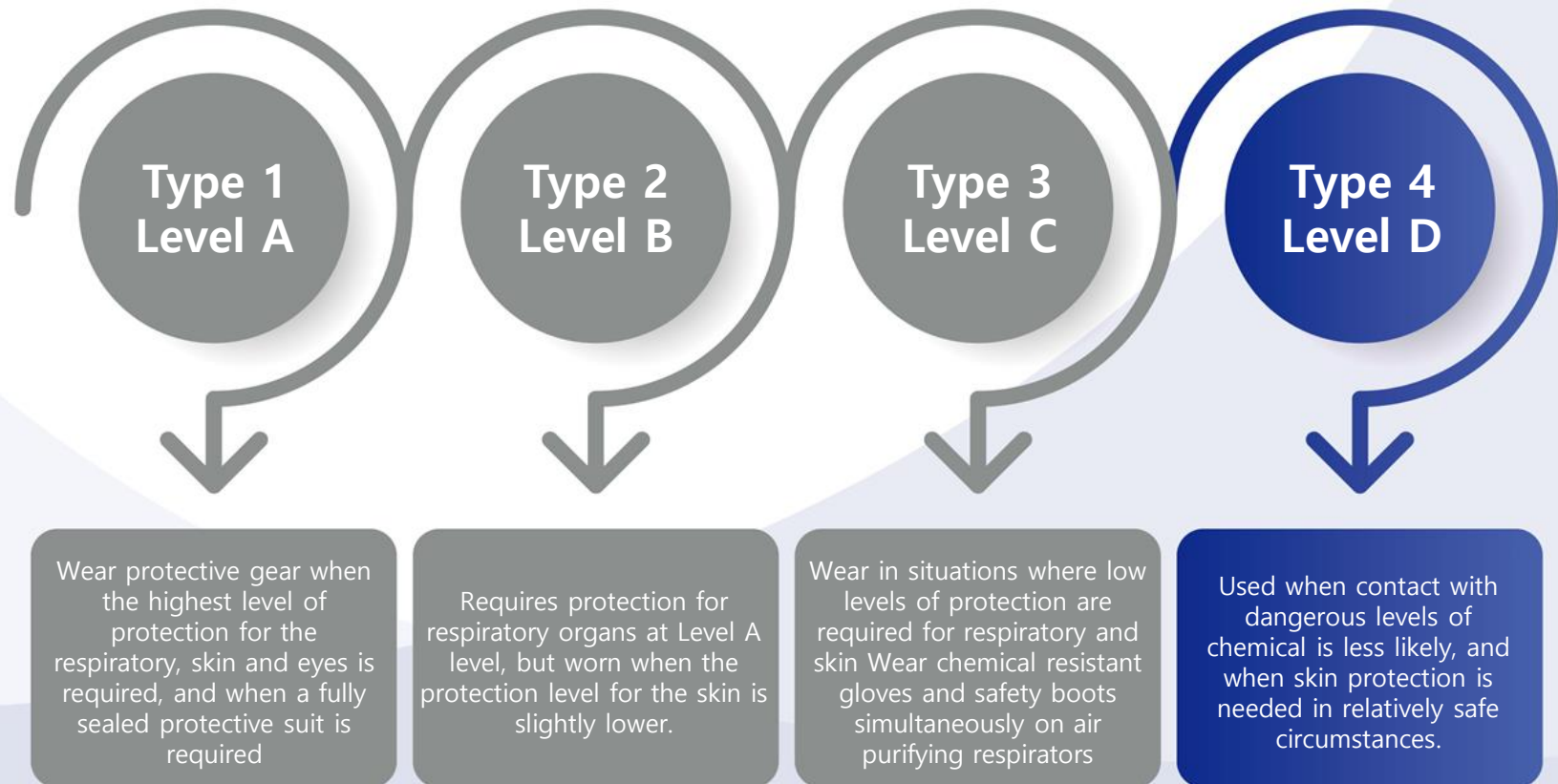
▲ Results of blood tests using synthetic blood

시험항목	시험결과
인공혈액침투시험 (%) : 고형노동부고시 제2020-35호, 별표 8의4	
MO	0.0
- CLASS	3
OD	0.0
- CLASS	3

▲ Results of Liquid Penetration Resistance Test

1. 이 성적서는 발행자가 표시한 시험 방법 및 시험결과에 대한 책임과 관련 증명서를 보증하는 것입니다.
 2. 이 성적서는 당 시험연구원의 시험 방법과 같이 총포, 소총, 권총, 권총 및 소총류로 사용될 수 있으며, 총도 이외의 사용을 금합니다.
 3. 이 성적서는 KATRI AS의 영문 버전과 동일합니다.

Type of Protective clothing



Product Features



01

Safety with double-sealed seal
primary blocking with zipper. Use the adhesive tape on the top of the zipper the second time. a safer protective suit.



SF Fabric / P.E Coating

Specialized SF fabric blocks nasal and blood, and P.E coating makes you feel more secure.

02



Safe Boots cover

First, block off contaminants with banding treatment. It's safer because you can tie it with a string.

04

03

Banding to prevent intrusive interception

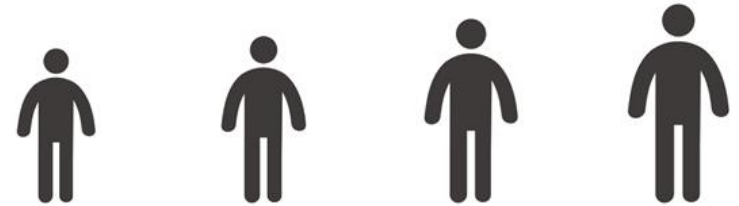
Banding the wrists and ankles to prevent internal penetration of contaminants.



Chart for protective clothing size



Size



	M	L	XL	XXL
Available height	150-165	165-175	175-190	190-200
Total length	198	200	204	208

About C/T

Product Type	Size Type	Box size	Weight	Quantity
MP60G	M/L/XL/XXL	570x400x630	16Kg	50sets(1box)

Product Type	Size Type	Box size	Weight	Quantity
Boots cover	FREE	570x400x630	13Kg	300sets(1box)

Korea Clothing Testing Laboratory (KATRI) Test report

Artificial blood Permeability resistance test

KATRI 한국 의류 시험 연구원 (Korea Clothing Testing Laboratory) Report for Artificial Blood Permeability Resistance Test. KATRI NO: SP2AD-0000105, PKR(E): 1 / 4. Test results show 'Pass' for all steps (1-6).

Penetrating Strength and Liquid Reaction Test

KATRI 한국 의류 시험 연구원 Report for Penetrating Strength and Liquid Reaction Test. KATRI NO: SP2AD-0000105, PKR(E): 3 / 4. Test results show 'Pass' for all categories (1-6).

Wear and tear strength and Tensile strength test

KATRI 한국 의류 시험 연구원 Report for Wear and Tear Strength and Tensile Strength Test. KATRI NO: SP2AD-0000105, PKR(E): 2 / 4. Test results show 'Pass' for all categories (1-6).

Liquid penetration test

KATRI 한국 의류 시험 연구원 Report for Liquid Penetration Test. KATRI NO: SP2AD-0000105, PKR(E): 4 / 4. Test results show 'Pass' for all categories (1-6).

Thank you

MUHAN Co., Ltd.
CEO Lim, Sung-il

B1, 36-10, Sangdo-ro 34gil, Dongjak-gu, Seoul, Republic of Korea
Mobile. +82-10-5064-7748
E-mail. minipos2@nate.com
Tel. +82-2-3663-7377 Fax. +82-2-3663-8377